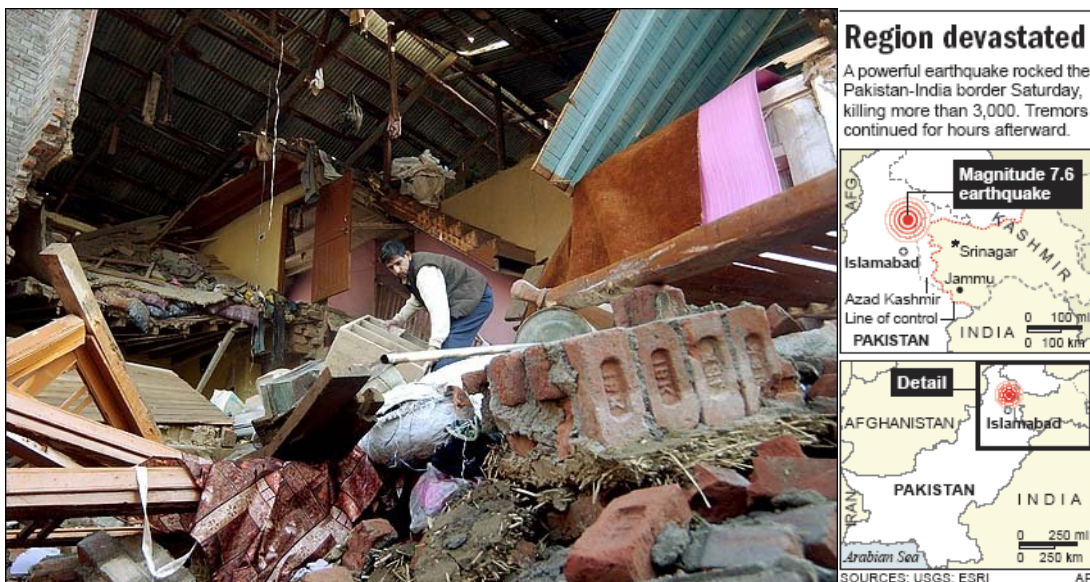


## South Asia Earthquake Relief Appeal

- Vast areas of Kashmir/South Asia have been devastated by the largest earthquake in a century, 7.6 Richter scale.
- At least 40 thousand people have been killed and 2.4 million have been rendered homeless.
- Many New England area physicians and other residents have lost loved ones in this tragedy.
- ***There is an urgent need for food, shelter, clothes, medicines, and medical care.***



**Association of Pakistani Physicians of New England (APPNE)** is leading a fundraising drive to deliver emergency funds and medical supplies to the affected area, working with physician groups and reputable non-profit organizations on the ground there.

**YOU CAN JOIN IN THE RELIEF EFFORT!**

**We need your generous help.**

Contact: \_\_\_\_\_

**To donate online and for additional info: [www.appne.org](http://www.appne.org)**

**Or make checks payable to: APPNE (Memo: Earthquake Relief),  
APPNE Earthquake Relief, 15 Diamond Road, Lexington, MA 02420  
Federal Tax ID: 36-0291079**

*APPNE is a chapter of the national Association of Physicians of Pakistani Descent of North America (APPNA), which represents the 10,000 Pakistani-American doctors in America. APPNA is 501 C3 organizations. All donations may be tax deductible as permitted by law. [www.appna.org](http://www.appna.org)*